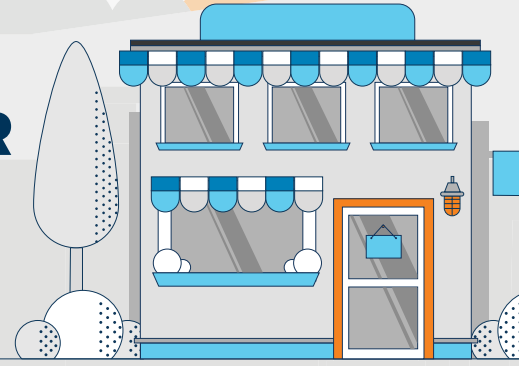


PREPARING & PROTECTING YOUR BUSINESS FROM WILDFIRES

Learn what to do before, during, and after a wildfire to reduce property damage, business interruptions, illness, and injury.



BEFORE



Ensure emergency preparedness and response plans are in place, including wildfire event procedures



Clearly mark site entrances and identify water sources, such as fire hydrants, water storage tanks, wells, and ponds



Install fire-resistant or non-combustible materials, like roof coverings, siding, overhangs, and eaves, roof vents with fire and corrosion-resistant screens, and spark arrestors on chimneys and vents



Connect with your insurance broker to make sure you have the right coverage against wildfire-related loss

DURING



If evacuation orders are issued, have all onsite personnel leave the premises immediately



Keep windows and doors closed and shut down building air intakes



Follow the documented procedures to shut down any equipment that may be affected by the wildfire



Provide regular updates to customers, suppliers, and personnel who are regularly on site



Monitor local radio, news outlets, or government websites for updates

AFTER



Follow directions from local authorities and only re-enter the area and your business if authorized to do so



Perform a visual perimeter inspection of the building before entering the building to check for potential hazards, like out-of-place electrical wiring, gas smells, or loose debris



Wear protective gear, including boots, safety glasses, a mask, and rubber gloves when cleaning



Test electrical, mechanical, fire protection, alarms, and other building systems, and repair or replace these systems if needed



Assess the damage, take inventory and photos of goods, equipment, and materials, and contact your insurance broker to begin the claims process

Contact a licensed insurance broker today to make sure you're protected against wildfire-related damage.

